



**terra centre**

Empowering Teen Parents to Succeed



# COMMUNITY REPORT 2023



## MISSION

Empowering teen parents to succeed.

## VISION

Teen parent families thrive and enrich our community.

## ORGANIZATIONAL VALUES

### PERSON CENTERED

We are relentless in putting those we serve at the heart of our work.

### RESPECTFUL

We are inclusive and celebrate diversity.

### COLLABORATIVE

We build authentic relationships and partnerships.

### INNOVATIVE

We are creative trailblazers.

### RESPONSIBLE

We ensure the sustainability of our core services.

## STRATEGIC GOALS

**1 ADAPTING AND ADVANCING**  
Terra will transform services in response to evolving needs and empower teen parent families to succeed.

**2 CONFRONTING RACISM**  
Terra will apply the principles of equity and anti-oppression to everything it undertakes: service delivery, policy development, relationship building, and system design.

**3 CAPACITY BUILDING**  
Terra will promote the development of staff, volunteers, and board, to achieve excellence in serving the mission.

**4 GROWTH AND DEVELOPMENT**  
Terra will expand its financial foundation with a focused effort on building a culture of philanthropy.

# Board of Directors

Susan Lovie

Chair

Katherine Salucop

Vice-Chair

Mary Stewart

Past Chair

Edwin Radke

Treasurer

John Beards

Secretary

Ozlem Cankaya

Pratiksha Gurung

Natalie Hermann

Amjad Khadhair

Kalen Lumsden

Marni Pearce

Kesa Shikaze

Tanya Tourangeau

# Table of CONTENTS

<b>1</b>	Letter from Leadership
<b>2</b>	Terra Services 2023
<b>3</b>	Braemar Partnership
<b>5</b>	Housing Partnership
<b>7</b>	Expanding Hope
<b>8</b>	EYOC
<b>9</b>	Community of Support
<b>11</b>	Building Stronger Futures Update
<b>12</b>	The Main Floor in 2024
<b>13</b>	Capital Campaign Champions
<b>14</b>	Future Builders
<b>15</b>	Partners
<b>16</b>	Funders & Grants
<b>16</b>	Financials

# Letter from *Leadership*



Karen Mottershead



Susan Lovie

As we reflect upon the past year, 2023 stands out as a transformative period for Terra, marked by a deep commitment to Equity, Diversity, and Inclusion (EDI). Our dedication to fostering a more just and equitable world is encapsulated in our second strategic goal: “to confront racism and apply the principles of equity and anti-oppression to everything it undertakes - service delivery, policy development, relationship building, and system design.”

Throughout this year of profound reflection and growth, Terra placed an intentional focus on EDI. We recognized the need to examine our conversations, decisions, relationships, and structures through an equity lens. To guide us on this transformative journey, we proudly contracted with Equity in Action, a renowned organization committed to advancing equitable practices.

At the organizational level, we formed a dedicated staff working group, providing leadership to steward and advance the work of equity and anti-oppression. The Terra agency engaged in a myriad of learning initiatives, including readings and reflection circles, workshops, team projects, and coaching sessions. Each program within Terra identified a “learning through action” project, fostering a hands-on approach to understanding and implementing equity principles.

What sets this endeavor apart is the unwavering commitment from every member of the Terra

organization. Both our Board and staff achieved 100% participation in a wide array of learning exercises. Together, we embarked on a journey of self-discovery, fostering deeper connections among ourselves and gaining insights into the systemic structures that shape our organization.

Our overarching goal was clear: to develop a comprehensive understanding of equity and anti-oppression, exploring what it entails and how it can be meaningfully integrated into the fabric of Terra’s everyday work. Our skilled consultants assisted in operationalizing tools and strategies, such as equity communication, that have become invaluable in guiding our ongoing commitment to fostering an inclusive environment.

As we navigate the path ahead, we carry the lessons of 2023 with us - lessons that have not only enriched our understanding of equity and anti-oppression but have also empowered us to make tangible, positive impacts on the communities Terra serves. Together, we stand united in our mission to confront racism, promote equity, and build a more just future for all.

Karen Mottershead  
**Executive Director**

Susan Lovie  
**Board Chair**



June Isbister, 97, was awarded the 2023 Bette Walkey Award for her dedication to the success of teen parents. Over 50 years ago, June came to Terra as our first official teacher, and she was known for going above and beyond her teaching role to empower the teen moms she worked with.

Bette Walkey was a teen parent in the late 1960s and the driving force in starting what would become Terra Centre for Teen Parents.



# Terra Services 2023



close to **1000**  
teen parents and children are  
served through Terra each year

**54%**  
identify as Indigenous

## Programs and Services Include:



### Early Learning and Childcare

with a strong focus on relationships, educators provide on-site quality care and an enriched learning environment for the infants and toddlers whose parents are attending Braemar School



### Youth Leadership

a focus on developing teen parent's skills including leadership, teamwork and communication skills, by providing opportunities for participants to contribute to their community



### Mental Health Services

provides individual and couples counselling and Psychiatric care to teen parents to help assess and address their mental health challenges and develop coping skills



### Group Services

a wide range of group programs to support teen parents in their development as parents and young adults while decreasing social isolation



### Family Learning

home visitation program that helps teen parents develop positive parenting skills while addressing barriers to achieving their goals



### Educational Supports

in partnership with Edmonton Public Schools, Terra provides on-site support and group programs to teen moms attending Braemar School



### Housing Support

in partnership with Brentwood Community Development Group, Terra supports teen parents to find and maintain secure and affordable housing



### Post High School Transition

supports teen parents to be successful in their post-secondary journeys and provides support to help more participants consider post-secondary options



### Clothing and Baby Essentials

helps teen parents manage their limited budgets by providing items like diapers, wipes, formula, baby clothing, and accessories for free



### Services for Young Dads

supports young dads with parenting capacity, employment searches, applying for funding, meeting basic needs, legal assistance, and more

# Braemar Partnership



One of Terra's longest and most successful partnerships is with Braemar School. The school was established and is championed by Edmonton Public Schools for the express purpose of providing an education in a supportive environment exclusively for pregnant and parenting teen moms ranging from 13 to 20 years of age. Since 1996 Terra participants have accessed educational programming through Braemar while also accessing wrap-around services from Terra's dedicated onsite teams. Having access to support while working towards educational goals has proven instrumental in empowering participants to overcome the unique challenges they may face.

The collaborative relationship between Terra and Braemar School has fostered an atmosphere of understanding and encouragement, allowing these resilient students to pursue their academic aspirations while navigating their personal parenting journey. The wraparound services provided by Terra's dedicated onsite teams extend beyond the classroom, encompassing emotional support, childcare and parenting support, and resources tailored to the unique needs of each student. This holistic approach not only contributes to many academic successes but has also instilled a sense of confidence and self-efficacy in our participants. The Terra and Braemar teams meet regularly to share information that helps to paint a complete picture of each student's needs, and it shows students that we are a unified front to support their unique experience. The enduring partnership between Terra and Braemar School

stands as a testament to the transformative impact that collaboration and comprehensive support can have on the lives of young people striving to build a better tomorrow.

## Services for Educational Achievement (SEA)

Terra's SEA team ensures participants at Braemar School access comprehensive support, including administering low-barrier funding through the Government of Alberta's Strengthening Hope Program. The SEA team provides personalized information and support for prenatal and parenting needs, addressing immediate social-emotional concerns, and easing connections to various systems and community resources. The main goal is to minimize barriers hindering high school education completion and educational goals.

Upon school registration, each student is assigned a dedicated Terra SEA Support Worker. These SEA Workers conduct regular meetings with students to understand their individual needs and goals. If other support is necessary, the SEA team seamlessly connects participants to other Terra programs and community resources tailored to their specific requirements. This personalized approach ensures that students receive the support essential for overcoming challenges and succeeding in their educational journey.

*"We recognize our uniqueness inside this community and work hard for these resilient students every day so that no one is on their own, they deserve our best daily."*

*~ Heather Duncan, Braemar Principal*

Over **3,500**  
registrations have been  
recorded at Braemar School  
from 1996 to present day.





At Braemar School volunteers help with the Clothes Closet program and donate and serve frequent hot lunches.

**Child Care at Braemar**

At Terra’s Child and Family Support Centre (CFSC), our focus is on the child/parent relationship, with highly trained Early Childhood Educators delivering top-notch early learning and care. These educators have a solid understanding of child development and are well-versed in play-based learning, child well-being, and the dynamics of various family structures. With a strong belief in the child as a capable and mighty learner, our educators shape their program planning around the observed interests of the children, fostering an environment where children are valued, respected, and recognized as vital members of each playroom community and the center.

In recognizing their crucial role as a valuable resource for teen parents, our educators offer not only guidance on child development but also emotional support to instill confidence in parents. By modeling activities and encouraging parents to replicate enriching experiences at home, educators actively engage with parents and their shared stories of home experiences. These collaborative efforts contribute to the development of strong relationships between parents and educators, supporting the overall success and well-being of the entire family.

**Mental Health Support at Braemar**

The Mental Health Supports at Braemar School include accessible services with a contracted Child and Adolescent Psychiatrist specializing in addictions. Our on-site mental health therapist engages informally with students, encouraging drop-ins and appointments for ongoing or emergent needs. Individual meetings prompt reminders for students to seek assistance. Additionally, the Braemar teaching team can receive consultation for managing student needs and classroom-based support for those facing mental health barriers.

Terra also collaborates with Alberta Health Services at Braemar School, providing on-site medical services. A Pediatrician, the Edmonton Birth Control Clinic, the Royal Alexandra Hospital Adolescent Pregnancy Clinic, and an Edmonton Health for Two Network Nurse offer frequent appointments for Terra participants, supporting healthy pregnancies, children, and moms.

Braemar Garden Day 2023



CFSC meet and greet to get to know Terra Educators



# Housing Partnership



Since opening our agency over 52 years ago, we have witnessed a pressing issue faced by teen parents— the challenge of securing safe and affordable housing. According to participant responses in our annual surveys, teen parents grapple with the unaffordability of safe housing, a predicament intensified by the stigma surrounding teen parenting. This stigma has been witnessed by landlords’ reluctance to accept parents and their children as tenants. The lack of accessible, secure housing becomes a significant barrier for teen parents with potential to hinder their educational pursuits, limit employment prospects, and complicate effective parenting.

The obstacle of teen families moving out of poverty includes their likelihood to reside in neighborhoods characterized by low-quality, insecure, and crowded housing. Recognizing the critical role of safe and secure housing in supporting the success of teen parents and their children, Terra and Brentwood Community Development Group (BCDG) jointly created the Successful Families Program, a ground-breaking initiative in the Edmonton region.

The partnership fills a crucial gap, offering both affordable housing and comprehensive support services under one umbrella. Terra and BCDG collaborate harmoniously, leveraging our distinct skills and assets to serve young families more

*This collaborative effort addresses the multifaceted challenges faced by teen parents, creating a pathway toward increased stability and positive family outcomes.*

effectively. BCDG takes on the responsibility of providing housing within a community setting, and implementing a rent subsidy program for families who qualify. They actively engage with young families as landlords, handling rent collection, maintenance, eviction, and other landlord responsibilities.

Terra provides on-site support services aimed at promoting healthy and positive parenting, budgeting skills, educational planning, and independence. Through in-home visitation and supporting child development, Terra ensures a holistic approach to the well-being of young families. The program also includes coordinated group sessions focusing on life and living skills. The Brentwood team understands the unique challenges teen parents face and works creatively to ensure successful tenancy. Terra and BCDG meet regularly to ensure the Successful Families Program is meeting the mission of the respective organizations. Together, Terra and BCDG ensure young families have the necessary support to meet the requirements and thrive within the Successful Families Program.

26 Terra participant families reside in the Brentwood community



Terra’s commitment to the success of teen parent families, and Brentwood Community Development Group’s commitment to affordable housing, a dream-team partnership was formed in 2014.





Preparing to move out of Brentwood and move on from Terra services.

*After 5 years in the housing program, this participant reflects on her time at Brentwood. She fondly recalls moving into her own home shortly after graduating from Braemar, when her daughter was just a baby.*

### Home Visitation

Through the Successful Families Program, home visitations provide an opportunity for our team members to connect with our participant families in the community. The goals of home visitation include building parental capacity, supporting healthy child development, and promoting community education and engagement.

Our Family Engagement Workers make opportunities to promote parent-child attachment and underscore the critical importance of responsive caregiving. We work with caregivers to strengthen their skills and confidence to navigate the complexities of parenthood.

Meeting families in their homes give us the time to discuss information on healthy child development and developmental milestones. By establishing age-appropriate expectations, we empower parents to

understand and actively participate in their child's growth and well-being. The program also serves as a valuable resource for caregivers, assisting them in managing stressors, coping with challenges, and developing planning, decision-making, and problem-solving skills tailored to the specific goals and needs of the family.

### Building a Community

Beyond the individual family unit, our Home Visitation Programs play a crucial role in connecting families to the broader network of formal and informal services and supports available within their communities. This approach not only reinforces the resilience of individual families but also contributes to the creation of a supportive ecosystem that promotes family wellness and, in turn, helps build strong and vibrant communities.

Our commitment to Home Visitation enriches the Successful Families Program by providing a personalized and holistic approach to supporting teen parents. Through these initiatives, we strive to empower young families not only to secure safe and affordable housing but also to foster positive parent-child relationships, build resilience, and actively contribute to the well-being of their communities. Together, these elements form a comprehensive framework that goes beyond housing, addressing the diverse needs of teen parents on their journey towards stability and successful family outcomes.



Group activities are hosted within the Brentwood Community

# Expanding Hope

## Strengthening Communities through Partnership

Across Alberta, the Provincial Family Resource Networks (FRNs) play a vital role in fostering resilient, strong, and healthy families. Our provincial initiative, Expanding Hope, collaborates with FRNs to specifically target teen parent families across the province. This innovative project aims to provide comprehensive support services, bridge gaps in underserved areas, and offer essential training for professionals working with young parents.

The collaboration between Terra Centre for Teen Parents, Kindred (Calgary), and FRNs has resulted in the creation of two crucial services. The first focuses on supporting teen parent families and children, particularly in underserved areas, while the second provides training for professionals aiding young parents. This multifaceted program offers coaching, child development information, caregiver-child relationship interventions, peer support groups, system navigation support, advocacy, and resources for pregnant and parenting teens throughout Alberta.

### Community Outreach and Engagement

Throughout the year, the Expanding Hope team covered 10,445 kilometers, reaching approximately 26 FRNs and service providers in rural Alberta.

The significance of visiting rural communities goes beyond the mere physical distance covered. It provides a unique opportunity to understand the specific needs and challenges faced by each community and the FRNs operating within them. Spending time in these communities fosters a natural learning environment, allowing for deeper connections to be formed. For instance, spending a day with an FRN enables in-depth conversations with



Stony Plain, AB - photo taken during FRN visit

program staff, shedding light on the diverse needs of the community and the ongoing work and education they undertake with families and individuals.

### Building Stronger Connections

Building stronger connections with FRNs is pivotal for effective communication and collaboration. Understanding the unique challenges faced by each community helps identify areas where Expanding Hope can contribute to building capacity and providing more opportunities for supporting communities. The commitment to visiting communities and learning from them in person, especially in Northern and Indigenous communities, has proven instrumental in forming genuine connections and relationships.

These connections have also led to increased referrals between Expanding Hope and other community service agencies across Alberta, ensuring that young families in our province received needed supports. These conversations have also provided opportunities for collaboration, where Expanding Hope has shared training around the unique needs of young families to volunteers and service providers.

*“Our regional FRN was so grateful to Expanding Hope for joining us in-person. Andrea had an excellent presentation and clearly showed the benefits to FRNs in accessing the Expanding Hope resource. An in-person presentation was especially engaging and enhanced connection. All participants reported they are more likely to use the Expanding Hope resource after being at the presentation, and the Yellowhead Hub has since recommended this presentation to other Hubs across Alberta.”*

**10,445**  
Kilometers driven  
throughout Alberta





There are 70 FRNs across Alberta

The Expanding Hope team worked directly with 17 pregnant and parenting individuals and their natural supports around the province this year. The Expanding Hope team supported them with resources such as housing, employment, accessing benefits, emotional regulation, child development, and child attachment.

Expanding Hope is actively working on creating a comprehensive resource addressing the unique challenges faced by pregnant and parenting youth. This resource will offer valuable insights, tips, and tools for service providers. Once completed, the handbook will be circulated to Family Resource Networks and other service providers, enhancing the overall understanding of the work.

Expanding Hope continues to make significant strides in building resilient, strong, and healthy communities. The upcoming year promises further growth with continued travel plans, reinforcing the commitment to supporting young parents and fostering a brighter future for Alberta's families.

**EXPANDING HOPE**  
kindred | terra centre

## EYOC

Terra's partnership with the Edmonton Young Offenders Centre (EYOC) provides support for incarcerated individuals seeking knowledge and support in positive parenting. For more than two decades, Terra has been providing group parenting sessions to EYOC participants, equipping them with essential skills and knowledge to strengthen their parenting capacity upon their release.

The collaborative effort between Terra and EYOC fosters a sense of community within the center. Terra's dedicated team facilitates open conversations, allowing participants to share their experiences and insights. By discussing barriers to effective parenting and creating a safe space for dialogue, the program aims to break down walls and build bridges towards healthier family dynamics.

Multiple 4-week sessions offered by Terra cover a comprehensive range of topics essential for responsible parenting. From understanding different parenting styles and developmental milestones to managing challenging behaviors and exploring legal supports, participants gain a holistic understanding of their roles as parents. The emphasis on positive discipline, attachment, and effective communication empowers individuals to navigate the complexities of parenthood with confidence.

Terra's partnership with EYOC is a transformative journey that empowers incarcerated individuals to build stronger, more nurturing connections with their children and their communities.



Terra team members.

# Community of Support

## Community Care: New Mom, Baby Bags Project

In response to the impending arrival of newborns among our students at Braemar School and in the community, we embarked on a heartwarming initiative to assemble *New Mom, Baby Bags*. Recognizing the unique challenges faced by teen moms, we sought the support of our generous community to collect essential items for these thoughtful care packages.

The *New Mom, Baby Bags* initiative serves as a powerful expression of care and understanding from the community towards our teen moms. It goes beyond the provision of tangible items; these bags symbolize support and encouragement for young parents grappling with the complexities that come with parenthood. For those who may be battling exhaustion, anxiety, or feelings of isolation, these bags act as a comforting reminder that they are not alone in their journey.

Filled with everyday essentials for newborns, the bags were built with care to positively impact the experience of new moms. This thoughtful gesture aims to alleviate stress and anxiety levels, assuring mothers that their babies' fundamental needs are taken care of. By addressing these basic needs, we hope to empower teen moms to navigate the challenges of parenthood with a renewed sense of confidence and support.

The *New Mom, Baby Bags* initiative is a testament to the strength of our community and its commitment

to nurturing the well-being of every member. In extending a helping hand, our community members are not merely providing material items but are actively taking part in building a supportive network that contributes to the success of our teen parent families.

Supporters for the *New Mom, Baby Bags* included:

- Summit Church
- Derrick Golf and Country Club
- Alberta Blue Cross - Hearts of Blue
- Edmonton Host Lions Club
- Seint, Jaime Little
- Peace Hills Insurance
- Lois Hole Hospital Labour and Delivery
- The Edmonton and District Quilters Guild
- Many individual donors

Terra's Clothes Closet volunteers carefully packaged the bags and essentials.

*New Mom, Baby Bags* included a diaper bag or backpack, diapers, wipes, baby skin cream, diaper cream, bibs, washcloths, towels, blankets /receiving blankets/quilt, onesies (undershirts), outfits or sleepers, and new hats.



New Mom, Baby Bag supporter

New Mom, Baby Bag supporters







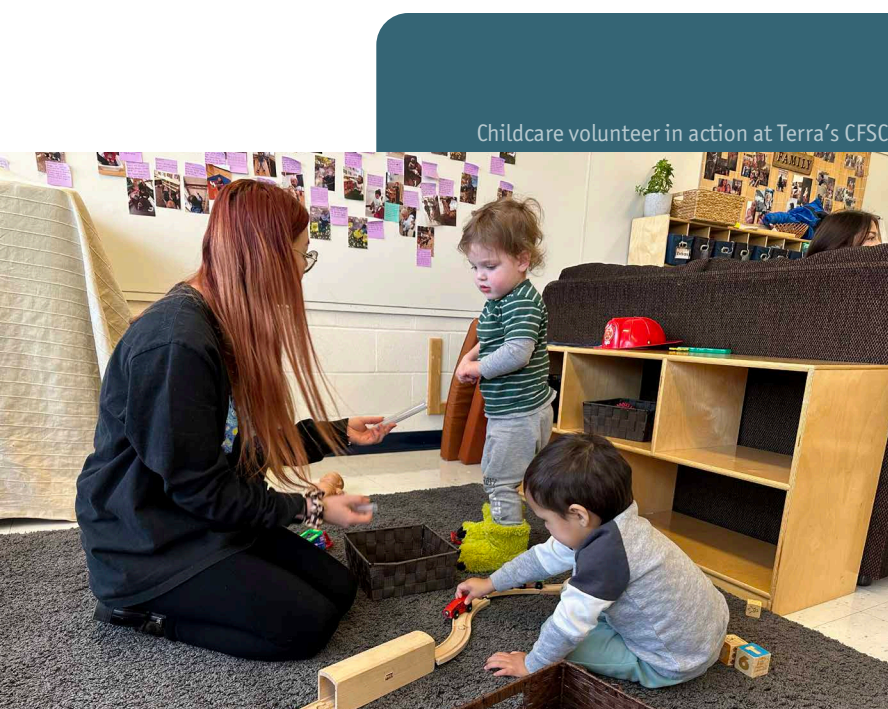
2023 Volunteer Appreciation event

## Volunteer Impact

In 2023, we had 65 individual volunteers and 16 volunteer groups contributed 3,851 hours of their time. Beyond their specific roles, volunteers significantly contribute to the sustainability of our programs and services. Also, through their personal networks, volunteers expand our reach and visibility, and many have evolved into financial donors. Volunteers are also key contributors to our Gift-in-Kind program and help gather the essential resources that directly benefit our participant families. We are extremely grateful for the efforts of our volunteer team as they actively shape the impact of our work.

## Childcare Support Volunteers

In Terra's vibrant playrooms at our Child and Family Support Centre, childcare support volunteers work alongside our Educators to co-create a sense of belonging and emotional well-being. These dedicated individuals develop trusting relationships that help fortify children's positive identities. Through thoughtful and meaningful interactions, our volunteers support opportunities for children to forge strong, healthy relationships with their peers and families. While immersed in learning through play, a positive sense of well-being is nurtured, anchored in consistency, respect, and responsive connections. The work of our childcare support volunteers helps plant the seeds that will grow into a lifetime of enriched relationships and community connections. In 2023, 13 childcare support volunteers contributed 768 hours to Terra's Child and Family Support Centre.



Childcare volunteer in action at Terra's CFSC

## Volunteer Opportunities at Terra

- Childcare Support
- Clothes Closets at Braemar School & Terra West
- Donation pickup/drop-off
- Groups Support Volunteers
- Casino Volunteers
- Bingo Volunteers
- Admin Support & Event Volunteers
- Braemar School Lunch Program

Learn more about volunteer opportunities for individuals and groups, at [terracentre.ca](http://terracentre.ca).

# Building Stronger Futures Update

With the completion of the Lower Level in the spring, we were thrilled to initiate the delivery of programs and services at Terra West.

Among the various programs available, our Food Security and Nutrition initiatives found a home in our new Community Kitchen. Participants engaged in diverse cooking classes facilitated by volunteers and community groups. The kitchen's four cooking stations provided an excellent opportunity to foster community bonds while preparing meals. One of our initial group cooking classes featured a vegetarian Egyptian meal, expertly taught by one of our staff members. Additionally, we welcomed community groups such as the Institute for the Advancement of Aboriginal Women, who instructed participants in making soup and bannock.

Our Clothes Closet and Pantry have been a welcomed resource by our participant families who have free access to essentials like food, diapers, and children's clothing, when they need it. The Clothes Closet relies entirely on donations from our supportive community and operates with the dedication of volunteers.

The spacious Lower Level has enabled us to expand our group programming significantly. From spa nights and family movie nights to art nights and dad's cooking nights, we have hosted a diverse range of groups at Terra West.

We have also had the extreme pleasure of welcoming our community of supporters for donor appreciation and volunteer appreciation events. Inviting community members to Terra West has allowed them to witness firsthand the breadth of programs we can now offer to teen parent families. Anticipation builds for the completion of the Main Floor, as it will pave the way for further expansion of services and programs that help remove barriers for teen parents working towards building stronger futures.





# The Main Floor in 2024

In our ongoing commitment to fostering a sense of community and providing optimal support for our participants and their families, we are entering the final phase of renovation on the main floor of our new building. This transformative project aims to create a welcoming and barrier-free environment that will leave a lasting positive impact on all those who enter our doors.

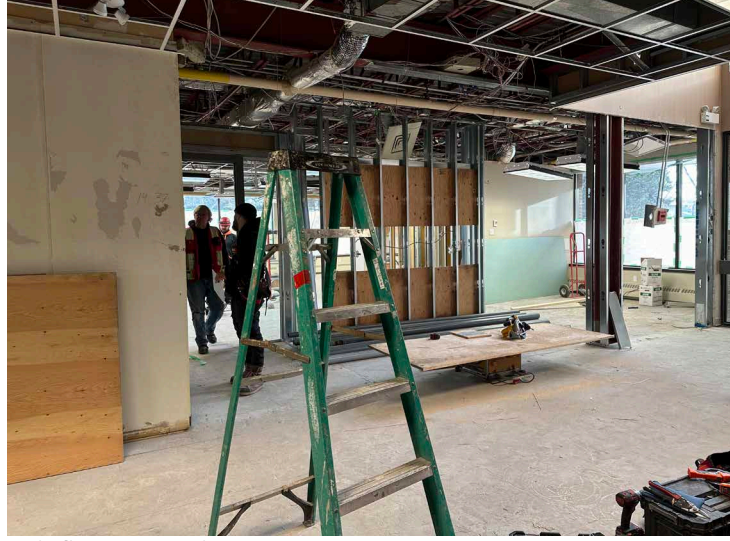
Central to our vision is the development of a warm and inviting lobby, designed to make a positive and inclusive first impression. The space will feature ample stroller parking and comfortable seating, ensuring a seamless entry for participants, their children, donors, volunteers, and community members. Elevator access to all floors further guarantees inclusivity, making our building easily accessible to everyone.

This thoughtfully designed lobby serves as more than just an entryway; it's the place where engagement and participation begin. With child-friendly activities, participants can comfortably wait for their Family Engagement Worker, Mental Health Therapist, group programming, or other activities.

## Parent and Child Engagement Space

One of the key elements of our plan is the Parent and Child Engagement Space, in direct view of the lobby. This space is dedicated to interactive play activities that support the physical, emotional, and social development of our youngest community members. With support for our generous community, we can equip the space with children's furniture, interactive play stations, and natural materials, it is estimated that approximately 600 individuals annually will directly benefit from this project.

The Parent and Child Engagement Space is designed to promote positive interactions between parents and children, offering a safe, comfortable, and welcoming environment for learning, relationship building, and social development. By supporting early literacy programs and development



Main floor construction

screening, this space emphasizes Terra's commitment to the holistic growth of every child.

Our main floor, specifically designed to be a supportive environment for parents and children, plays a crucial role in the lives of teen parents and their children. Terra's main floor will help ensure that the children of teen parents receive the best possible start in life, laying the foundation for successful futures.

The lobby space will also serve as a showcase for our community of support, featuring information about our mission, vision, values, and the impact we have made. This visual representation of the support from donors and the community is intended to inspire others to join us in our mission, forging stronger connections between our organization, the lives we impact, and the broader community.

Our vision for the main floor goes beyond bricks and mortar; it's about building a vibrant, inclusive community where every participant and their family can belong. As we embark on this final phase of our project, we eagerly anticipate the positive transformations that will result from our commitment to creating a welcoming space that truly makes a difference in the lives of those we serve.

We need your support to complete the work on the main floor. To join us in *Building Stronger Futures*, please contact Karen Mottershead at [kmottershead@terracecentre.ca](mailto:kmottershead@terracecentre.ca).

# Capital Campaign *Champions*

We are deeply grateful to those donors\* who believed in our vision and invested in our capital campaign. Thank you from the bottom of our hearts:

- Sylvia Nasser
- Anonymous Donor
- Eldon & Anne Foote Capital Fund
- Stollery Charitable Foundation
- The Kristie Charitable Foundation
- Medavie Foundation
- Edmonton Community Foundation
- Edmonton Civic Employees Charitable Assistance Fund
- Edmonton (Host) Lions Club
- The King Family
- Watson Badger Family
- The Charity Tree
- Edwin Radke
- Megan, Kaylee, Keith & Laura Haynes
- Shad & Natasha Chapman
- Brent & Sheila Buchanan
- Karen & Wayne Mottershead
- Chris LaBossiere & Lisa Mullen
- Karmen & Don Masson
- Kristen & Scott Fitzgerald - Leading Edge Physiotherapy
- Mark & Joyce Huchulak
- Mary Stewart
- Red & Grey Cui
- Rhonda & Cory Newman
- Jeremy Rose
- O'Grady Family
- Jennifer Jennax & Trevor Hughson

\*Donors listed above have made major gifts to Terra's capital campaign or have made multi-year commitments.

Architectural rendering of new main floor lobby space.



## Future Builders

We celebrate and thank our *Future Builders* for their unwavering commitment to our vision of teen parent families thriving and enriching our community. These special donors have contributed to Terra's endowment fund or included us in their estate plans.

- Private Member
- Bert & Joyce Cook Fund at Edmonton Community Foundation
- Valerie Boisvert
- Margaret R. Brooks
- Mariesa Carbone
- Karen L. Daam
- Derrick Golf and Winter Club – Ladies Golf Group
- Jeffrey Dick & Debbie Jeannotte
- Elaina Dorsey
- Dennis & Judy Dube
- Barbara Dussault
- Edmonton Oilers Community Foundation
- Eldon & Anne Foote Fund at Edmonton Community Foundation
- Stella Gammie
- Ricki Golick
- Krista Goretzky
- Kathy Hawkesworth & Gary Kriviak
- Jac'ý Hayter Achieving Dreams Together Fund at Edmonton Community Foundation
- Carmen Haywood
- Barbara Hoff-Morin
- Janet Howell
- DeAnn Hunter
- Jennifer Jennax & Trevor Hughson
- Jim Klinge & Wendy Doughty
- Mellissa D. Kraft
- Karen Kvill
- Wendy Leitch
- Peder Lodoen
- Katherine Audrey Lowe
- Maureen Barnes & Joe Dolan Award Fund at Edmonton Community Foundation
- Meghan DeRoo McConnan
- John A. Meston
- Camela Miles
- Wayne & Karen Mottershead
- Sylvia Nasserì
- Abilio & Jennifer Nunes
- Charlie and Suzanne Nunn
- Optimax Benefits (Earl Shindruk)
- June Panteluk
- Della Paradis
- Pro Active IT Management
- Rosemary Robins
- Ken & Margaret Singleton
- Marilyn Ann Slemko
- Sylvia Nasserì Education Fund for Terra at Edmonton Community Foundation
- Terra Nutrition Fund at Edmonton Community Foundation
- The Family of Toby Levy Fund at Edmonton Community Foundation
- Amy Walchuk
- Barry & Valerie Walker
- George & Roberta Wells

Planned gifts provide future income for Terra to ensure we can continue empowering teen parents to succeed well into the future. Membership in *Future Builders* is available for anyone making a planned gift, no matter the size.

If you have made – or are thinking of making – a planned gift for Terra, please let us know. When you do, we want to honour you as a member of *Future Builders*.

Connect with us at [terracentre.ca](http://terracentre.ca).



# Partners

**Terra is fortunate to have a wide range of partners in the community to help us reach our goals. Through collaboration, we are able to better serve our families and achieve more together.**

- AHVNA
- Alberta Father Involvement Initiative
- Alberta Parent-Child Assistance Program
- Association of Early Childhood Educators of Alberta (AECEA)
- Bent Arrow Traditional Healing Society
- Birth Control Centre
- Bissell Centre
- Bonnie Doon Health Clinic
- Boyle Street Community Services
- Braemar School
- Brentwood Community Development Group
- C5 Northeast Community Hub
- Civida
- Centre for Child, Family and Community Research
- Centre for Family Literacy
- Child Development Dayhomes
- Community Initiatives Against Family Violence (CIAFV)
- Community Options
- East Edmonton Health Centre
- Edmonton and Area Fetal Alcohol Network
- Edmonton Catholic School District
- Edmonton Inter-Agency Youth Services Org (EIYSA)
- Edmonton Mennonite Centre for Newcomers
- Edmonton Public Library
- Edmonton Public School Board
- Edmonton Young Offender Centre
- Edmonton's Food Bank
- Father Involvement Network Edmonton Region
- The GRIT Program
- Health for Two
- Jasper Place Family Resource Centre
- Kara Family Resource Centre
- Kids Kottage
- Kindred (Calgary)
- La Leche League of Canada
- Legal Aid Alberta
- MacEwan University Early Learning & Child Care Program
- Norwood Child and Family Resource Centre
- Ottewell Place
- Our Lady of Grace School of Alternative Education
- PolicyWise for Children & Families
- Post Partum Depression Association
- Primrose Place Family Centre
- Red Cross
- Royal Alex – Adolescent Pregnancy Care Clinic
- TODAY Family Violence Help Centre
- University of Alberta, Department of Educational Psychology
- West Jasper Place Public Health Centre
- Woodcroft Community League
- YOUCAN Youth Services
- Youth Empowerment and Support Services (YESS)



# Funders and Grants

Funders are instrumental in ensuring continuity of core programs and services. Terra is extremely grateful for the generous support of several granting agencies, government departments and foundations.

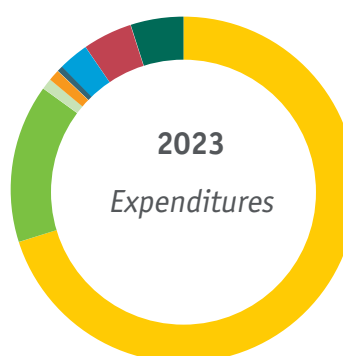
- Alberta Advanced Education
- Alberta Children’s Services
- Alberta Community and Social Services
- Canadian Women’s Foundations
- City of Edmonton – Donate A Ride
- City of Edmonton Family and Community Support Services (FCSS)
- CST Foundation
- Edmonton Community Foundation
- Edmonton Region Child & Family Services
- Government of Alberta
- Government of Canada – Ministry of Families, Children and Social Development
- Public Health Agency of Canada (including the Alberta CAPC-CPNP Coalition)
- RBC
- Realtors Community Foundation
- Royal Alexandra Hospital Employees’ Charitable Donations Fund
- Stollery Charitable Foundation
- United Way of Alberta Capital Region

We have made every effort to ensure these lists are complete and accurate. If we have made an error or omission, please accept our apology, and contact our office at 780-428-3772 and we will correct our records.

# Financials



- 51% - Provincial funding
- 5% - United Way funding
- 9% - Federal funding
- 6% - Municipal funding
- 15% - Other funding
- 14% - Fundraising



- 70% - Staffing
- 15% - Program Supplies
- 1% - Staff Development
- 1% - Staff Travel
- 0.5% - Volunteer
- 3% - Office System
- 4.5% - Occupancy
- 5% - Fundraising



Terra Centre for Teen Parents  
10320 - 146 Street NW  
Edmonton, AB T5N 3A2

[terracentre.ca](http://terracentre.ca)